



PM 1050-16TB

Track Pugmill



 YouTube

**SEARCH**

IMS PUGMILL





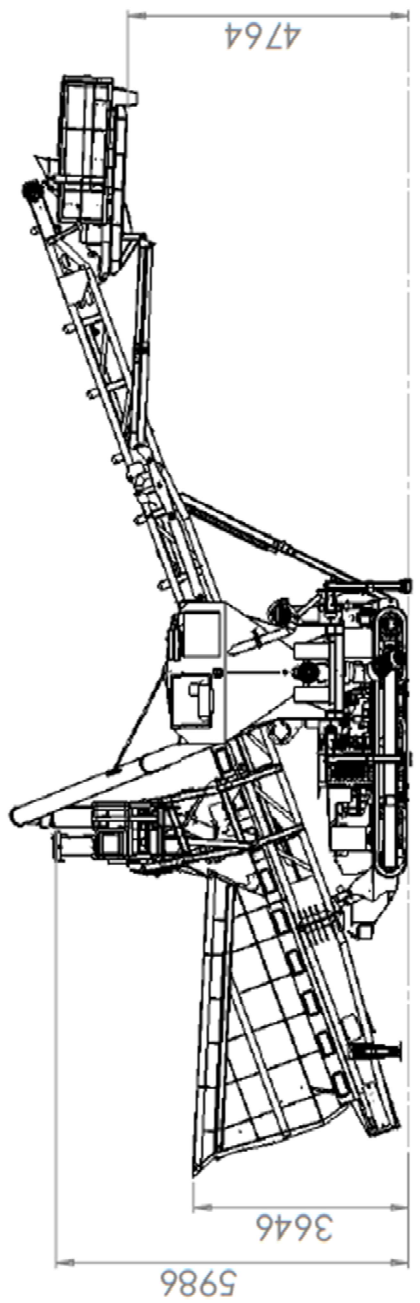
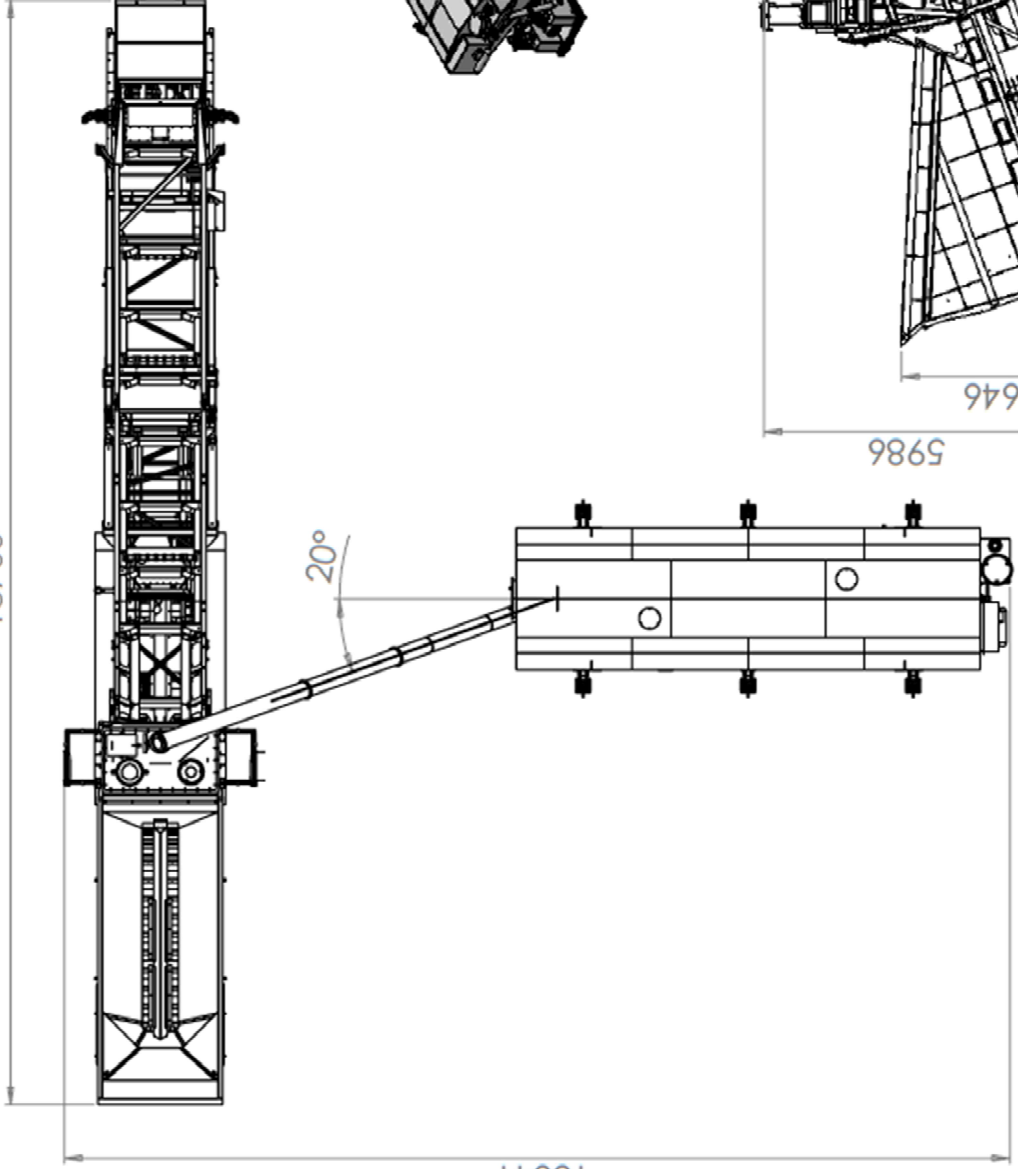
The PM1050-16TB, the ideal solution for jobs that require high production material blending and mixing with the added bonus of a stockpiling facility



18760


16041

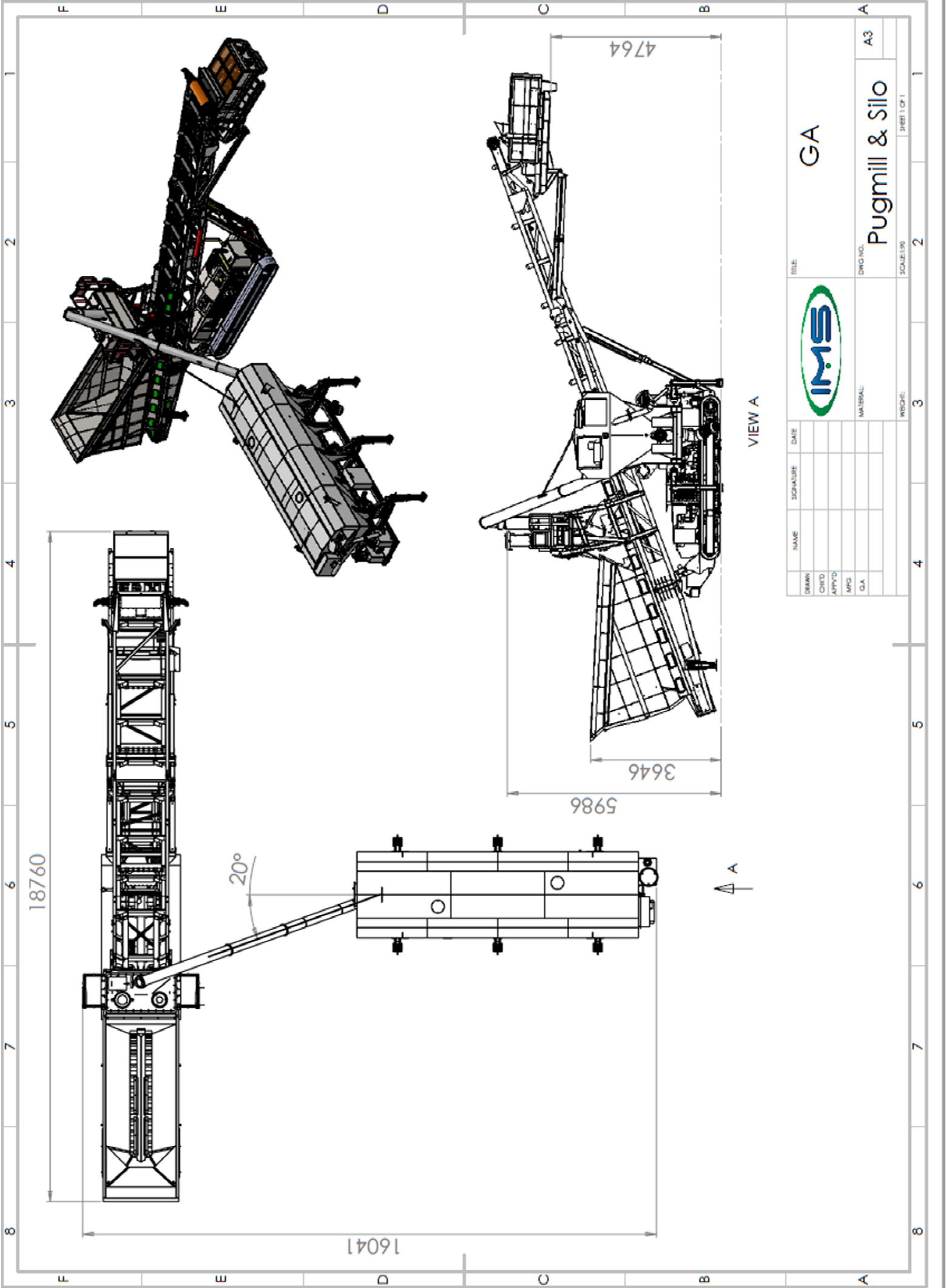
20°



VIEW A



NAME	SIGNATURE	DATE		TITLE	GA	
DRAWN				DWG NO.		A3
CHECK				MATERIAL		Pugmill & Silo
APPROV'D				SCALE		1 OF 1
DATE				REVISION		





### **Conveyor**

The conveyor is constructed in 3 latticed angle sections , the tail section includes a generous 8m<sup>3</sup> feed hopper and the head section includes the conveyor drive, consisting of twin Sauer-Danfoss hydraulic motors coupled to a rubber lagged drive pulley

### **Diesel-Hydraulic Power Unit**

The conveyor is powered by a 75kw liquid cooled Diesel Engine coupled to a hydraulic pump giving sufficient oil flow to drive the conveyor at maximum output, to provide the drive for the PugHead, to operate the crawler tracks, and to operate the various hydraulic cylinders



### **Undercarriage**

The undercarriage consists of the hydraulically operated crawler tracks together with an adjustable support trestle arrangement, which allows variation in both feed and discharge heights

### **Pugmill**

The Pugmill is designed with Twin Mixer shafts for anti-surfing and high production material blending. Each shaft is fitted with replaceable 500 grade Paddle tips rotatable through 180° to equalize wear. The Pugmill drive consists of a hydraulic piston motor directly coupled to a Chain Final Drive to give fixed output speed of 470rpm.

### **Hydraulic Folding Mechanism**

The folding mechanism of the conveyor head and tail sections allow for quick site set up and provides a flexible approach to transport of the unit. The hydraulic folding is designed so that the hydraulic cylinder piston rods are fully protected when the machine is operational

### **Emergency Stop System**

Every PM1050-16TB Track Pugmill unit is equipped from the factory with an emergency stop system that will render the plant inoperable when activated, providing added safety for the operator.



### **Standard Features**

- Crawler Track Movement with Dog Lead Control
- 75 kw Diesel-Hydraulic Drive
- 1050mm (42") wide 3 ply belt
- Hydraulic Folding on Pugmill
- Hydraulic Folding of Head Section
- Hydraulic Raise and Lower
- Hydraulic Adjustment of Tail Section for transport on Low Loader
- Water Header Tank
- Additive Chute
- Wash facility for Pugmill Mixer

**Volume Range: 50-500tph**  
**Additive Range: 1%-20%\***

### **Options**

- Detachable Cement Weigh Hopper
- PLC System
- Dual Power: Electric & Diesel / Hydraulic Power Unit
- Hopper Hardox Wearplates
- Remote Start/Stop
- Tier 3 Engine ROW
- Tier 4 Engine USA
- Tier 5 Engine- EC and UK
- Static Pugmill, all electric



\* Dependant on Volume



## Specifications

Operational Length	18M" (60')
Operational Height	5M" (16'4")
Loading Height	2.87M (9' 6")
Hydraulic Tank Capacity	377 l (83 gallon)
Diesel Fuel Capacity	216 l (48 gallon)
Engine	four Cylinder Liquid Cooled
Transport Width	2.25M (7' 4")
Transport Height	3.5M (11' 6") Low Loader 2.546M (8' 4") Container
Transport Length	13.5M (44' 3") Low Loader 12.0M (39' 4") Container
Total Weight	19680 kgs (43296 lbs)



*Due to Irish Manufacturing Services Limited's policy of continuing product improvements, Specifications are subject to change without notice or obligation. No representation is made that the products depicted herein comply with any laws, codes, rules, regulations or standards. Compliance is the responsibility of the user. Additional safety equipment may be required by the particular location and application of product.*

**Irish Manufacturing Services Limited**

**34 Dunroe Road, Clogher, Co. Tyrone, N. Ireland BT76 0DZ**

**Tel. +44 (0)28 8554 9656 E-mail [info@ims-ltd.ie](mailto:info@ims-ltd.ie) website; [www.ims-ltd.ie](http://www.ims-ltd.ie)**



